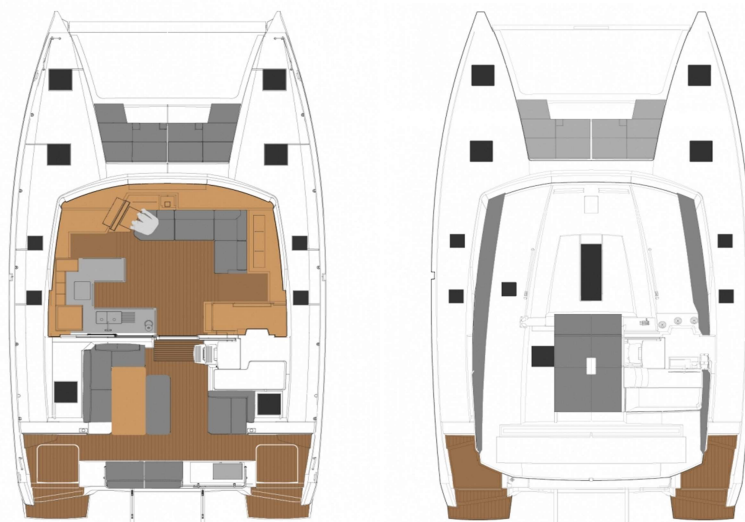
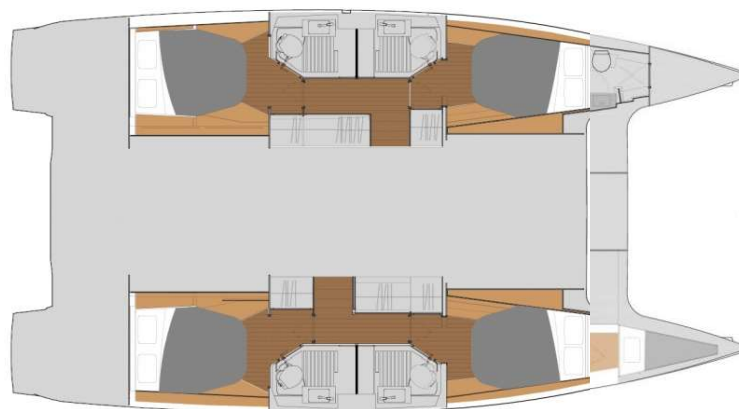


Fontaine Pajot Astrea 42

"Astrea"

- Anno/Year: 2019
- lunghezza/Lenght (m): 12,58
- larghezza max/Max Beam (m): 7,20
- pescaggio/Draft (m): 1,25
- Dislocamento/Displacement 11500 kg
- Superf. Velica Randa/Sail Area 753.5 ft² - 70 m²
- Superf. Velica Genoa/Genoa Area 441.3 ft² - 41 m²
- Cabine/Cabins: 4+1
- WC: 4+1
- Posti letto/Berths: 8+2+1
- Main Sail: Classica/Battened
- Genoa: Rollabile/Furling
- Motore/Engine: 2 PENTA D2 VOLVO 50HP
- Bimini Top: Yes
- Teak: No
- Capacità carburante/Fuel (lt): 470
- Serbatoio acqua/Water (lt): 2 X 350
- Acqua calda/Hot Water: Yes
- Fridge - Freezer: Yes
- Cockpit fridge: yes
- Macchina del ghiaccio/Ice-maker: no
- Gruetta elettrica/Electric Windlass: Yes
- Winch elettrici/Electric Winch 1 for sails(non per la gruetta-not for tender)
- Log - Echo: Yes
- GPS Plotter: Garmin GPS 7410 2* MULTI GMI20
- Autopilota/Autopilot: Yes
- Stazione del vento/Wind Station: Yes
- V.H.F.: Yes
- AIS yes
- Inverter: Yes
- Generatore/Generator: MASE 6500
- Aria cond./Air Cond. : no
- Dissalatore/Watermaker: OSMOSEA 100 lt/h
- Lavastoviglie/Dishwasher: no
- Barbecue: Yes (gas)
- Forno Microonde/Microwave oven: yes 220 volt
- Caricabatterie/Battery Charger: Yes
- Supporti elettrici/Electric Supply: 220 -12 Volt
- Radio - CD - Mp3: fusion system
- Speakers int/ext cockpit
- Cuscinerie/cushions cockpit/bow
- Dinghy: Yes - 3,40 mt (outboard engine 9,9 Hp not enclosed)
- Elica di prua/Bow thruster: No
- Pannelli solari / Solar Panels: 500 watt
- Tavolo in Pozzetto/cockpit table: Yes



Fountaine Pajot Astrea 42

"Astrea"



